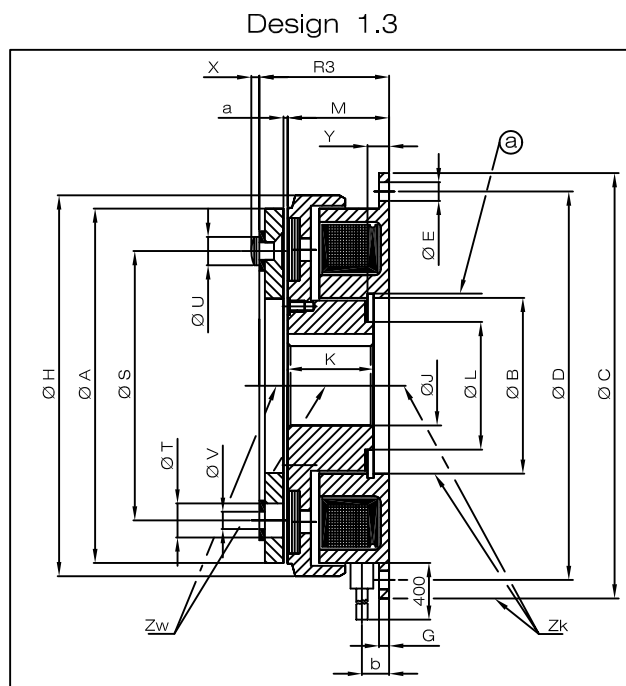
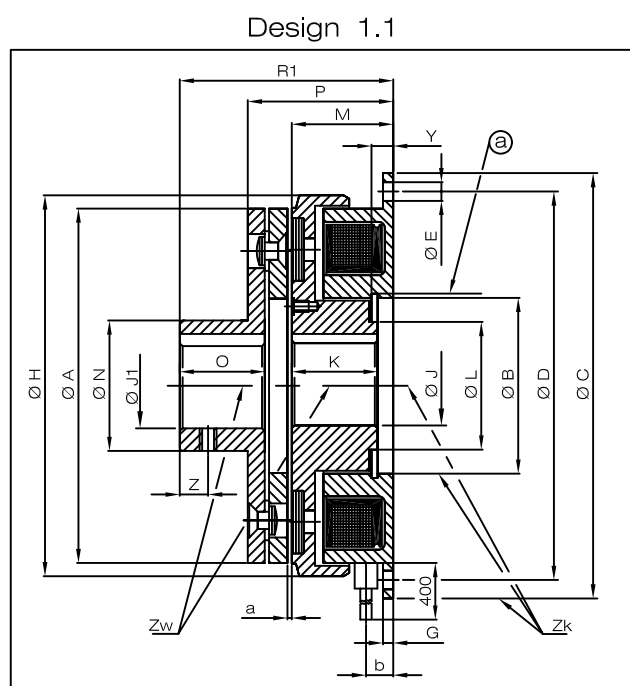


**DIMENSIONS**

**PARAMETERS**

Size		31	40	50
Torque	Ms [Nm]	630	1250	2500
Max. Speed	rpm [min <sup>-1</sup> ]	1500	1500	1500
Input Power	P20 [W]	80	100	120
Permissible misalignment	Zw [mm]	0.15	0.2	0.2
	Zk [mm]	0.3	0.4	0.4
	ØA	315	400	500
	ØBH8	160	200	250
	ØCh9	355	440	540
	ØD	335	420	520
	ØE	11 x 8	14 x 8	14 x 8
	G	14	17	22
	ØH	332	418	526
	K	53	69.5	84
	ØL	130	160	190
	M	63	76.5	93
	ØN	135	175	225
	O	64	76	102
	P	92	112.5	138
	R1	143	172.5	220
	R3	79	96.5	118
	ØS	250	315	400
	ØT	28	32	35
	ØU	26 x 4	29 x 4	32 x 4
	ØV	16.2 x 4	18.2 x 4	20.2 x 4
	X	4	4.5	5
	Y	9	11	14
	a	1	1	1
	b	20	28	32
	ØJ <sup>H7</sup> (max.)	105	130	150
	ØJ1 <sup>H7</sup> (max.)	105	130	150

**IMPORTANT :** 1 Nm = 0.102 kgm = 0.737 lb. ft.

Standard voltages: 24 V.D.C.; 96 V.D.C.; 190 V.D.C.

Other voltages on request.

Ms: Dynamic Torque

All dimensions are in mm.

Keyways to DIN 6885/IS:2048

ⓐ Circlip grooves to DIN 472/IS:3075 (Part 2).

P : Coil power at 20° C in W