



**Emco
Dynatorq**

Title:

Electromagnetic Brake

Type - 14.112 Design 1.3, 1.2, 1.1 (Normally Off)

Reference:

—

DIMENSIONS

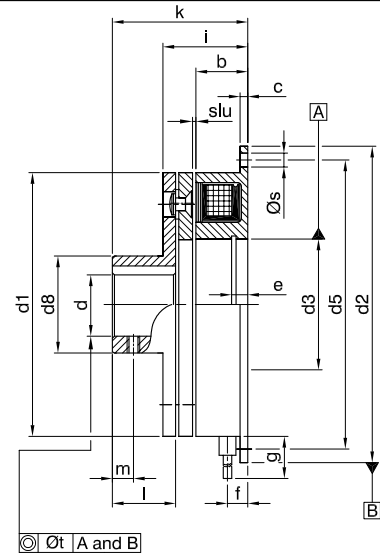
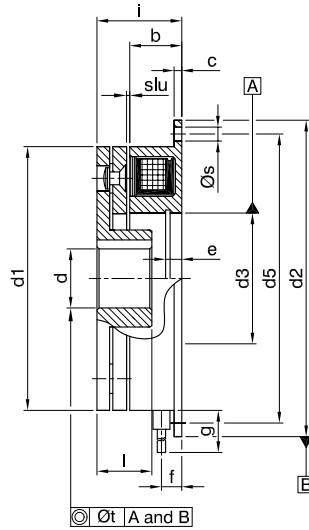
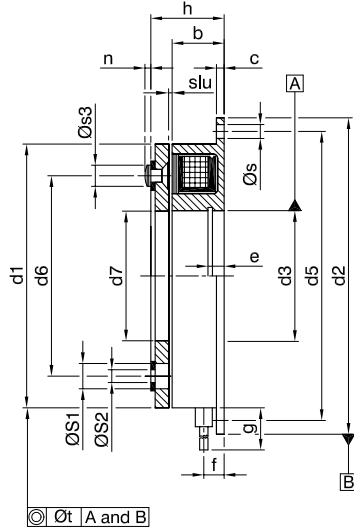
Electromagnetic Brake

0.6 - 2.4 Nm.

Type:14.112.□□.1.3

Type:14.112.□□.1.2

Type:14.112.□□.1.1



PARAMETERS

Size	Mk Nm.	P ₂₀ W	b	c	dH7				d ₁ h8	d ₂ h9	d ₃ H8	d ₅	d ₆	d ₇	d ₈	e	f	g	h	i
					min.	Stand.	max.													
03	0.6	6	17	2	6	6	6	32	45	13	38	23	12.5	12	3.1	7.5	400	19.55	21.6	
04	1.2	8	20	2	8	8	10	40	54	19	47	30	18.5	17	3.3	8	400	23.15	25.9	
05	2.4	10	22	2	10	10	15	50	65	26	58	38	25.5	24	3.3	8	400	25.2	28.2	

Size	k	l	m	n	s	s1	s2	s3	slu	t	m Kg.		
											1.1	1.2	1.3
03	29.6	10	4	1.2	4x3.4	3x6	3x2.6	3x4.5	0.15	0.06	0.079	0.079	0.072
04	35.2	12	5	1.4	4x3.4	3x6	3x3.1	3x5	0.15	0.1	0.131	0.131	0.118
05	37.2	12	6	1.4	4x3.4	3x6.5	3x3.1	3x6	0.2	0.1	0.215	0.215	0.2

IMPORTANT : 1 Nm = 0.102 kgm = 0.737 lb. ft.
 Standard voltages: 24 V.D.C.; 96 V.D.C.; 190 V.D.C.
 Other voltages on request.
 Ms: Dynamic Torque

P : Coil power at 20° C in W
 keyways to DIN 6885/IS:2048

All dimensions are in mm

THIS DOCUMENT IS THE PROPERTY OF EMCO DYNATORQ PVT. LTD. UNAUTHORISED DISCLOSURE TO ANY THIRD PARTY OR DUPLICATION IS NOT PERMITTED