

EMCO® & EMCO-Simplatroll®

making machines friendly

The brands **Emco** & **Emco-Simplatroll** stand for uncompromised quality in products as well the services. Products that are safe & reliable and service that makes our products and your machines perform efficiently.



Regd. Office :

1st Floor, Sita Mauli, above Bank of Maharashtra, Madanlal Dhingra Road
Panch Pakhadi, Thane (West), 400 602, INDIA
Tel : +91 (0) 22 2540 5490 / 2545 2244 / 2541 5913 / 2541 5914
Fax : +91 (0) 22 2545 2233
Email : mktg@emco-dynatorq.in

Unit I :

Shivam Industrial Estate, Bldg. No. 3, Gala No. 12A & 12B
Tungareshwar Phata Road, Sativali, Vasai (E), Thane - 401208
Tel : +91 (0) 250 2694 777 / 6294 888 / 6063 999 • Fax : +91 (0) 250 2481 086
Email : vasai@emco-dynatorq.in

Unit II :

1003, GIDC, Waghodia, Dist. Baroda 391 760, Gujarat
Tel : +91 (0) 2668 262186 / 263089 • Telefax : +91 (0) 2668 262180
Cell : +91 90990 78735
Email : dynatorq@gmail.com / marketing.dynatorq@gmail.com

Unit III :

Gala No. 6A & 8, Kedarnath Bldg. Tungareshwar Indl. Estate, Sativali, Vasai (E)
Tel : +91 (0) 250 2480 178 / 2480 921

Unit IV :

1426, GIDC Waghodia, Dist. Baroda 391 760, Gujarat
Tel : +91 (0) 2668 290761

Website : www.emco-dynatorq.in



Emco Dynatorq Pvt. Ltd.

(Formerly **Emco Lenze Pvt. Ltd.**)

CIN NO. : U74999MH1991PTC061109

ISO 9001:2008 Company

EMCO-Simplatroll®

DC
Electromagnetic
Brakes &
Clutches

Type 14.115
Flange Mounted Brakes
(Normally OFF)



CE



Type 14.105
Flange & Shaft Mounted Clutches
(Normally OFF)



Emco Dynatorq Pvt. Ltd.

(Formerly **Emco Lenze Pvt. Ltd.**)

ISO 9001:2008 Company

CAT No. 458 IP 66 / Rev. 1

Emco Simplatroll DC Electromagnetic Brakes (Flange Mounted) and Clutches (Flange & Shaft Mounted) are designed for high consistent operating characteristic with a torque range of 7.5-2500 Nm. They are available in 3 different designs to stop/connect the drive or load side either shaft, pulley and sprocket. They are maintenance free and provided with a unique pre-stressed spring made from German spring steel and a coil with class 'F' insulation to give million of operations without fatigue.

Salient Features of Type 14.115

- ▶ Torque : 75 Nm to 2500 Nm
- ▶ Single Plate Dry Type
- ▶ Zero Backlash
- ▶ Residual-free
- ▶ Fast Switching Times
- ▶ High Operating Reliability
- ▶ High Operating Frequency
- ▶ Compact Dimensions
- ▶ Simple Construction
- ▶ Maintenance Free
- ▶ Long Life
- ▶ Unique Pre-stressed Spring
- ▶ Coil with Class 'F' Insulation#
- ▶ Stationery Field (No Slip Rings)
- ▶ Non Asbestos Special Friction Material*
- ▶ Consistent Operating Characteristics
- ▶ Simple Wear Compensation Adjustment
- ▶ Simple Installation
- ▶ Low Inertia of Rotating Parts
- ▶ No Restriction on Mounting Position

Salient Features of Type 14.105

- ▶ Torque : 75 Nm to 2500 Nm
- ▶ Single Plate Dry Type
- ▶ Zero Backlash
- ▶ Residual-free
- ▶ Fast Switching Times
- ▶ High Operating Reliability
- ▶ High Operating Frequency
- ▶ Compact Dimensions
- ▶ Simple Construction
- ▶ Long Life
- ▶ Unique Pre-stressed Spring
- ▶ Stationery Field (No Slip Rings)
- ▶ Consistent Operating Characteristics
- ▶ Simple Wear Compensation Adjustment
- ▶ Coil with Class 'F' Insulation#
- ▶ Asbestos-free Friction Materials*
- ▶ Simple Installation
- ▶ Low Inertia of Rotating Parts
- ▶ Raw Materials to DIN Standards
- ▶ No Restriction on Mounting Position

Higher coil insulation available on request. * Standard Indian liner. German liner available on request.

Applications



Cranes & Hoists



Machine Tools



Packaging Machines



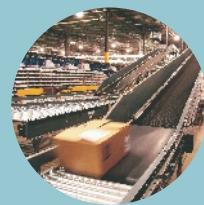
Textile Machines



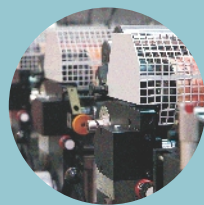
Wire Drawing Machines



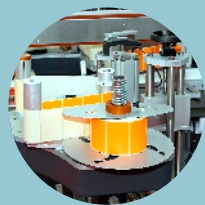
Pharmaceutical Industry



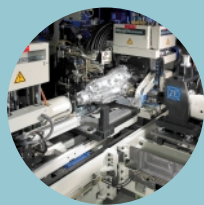
Conveyors



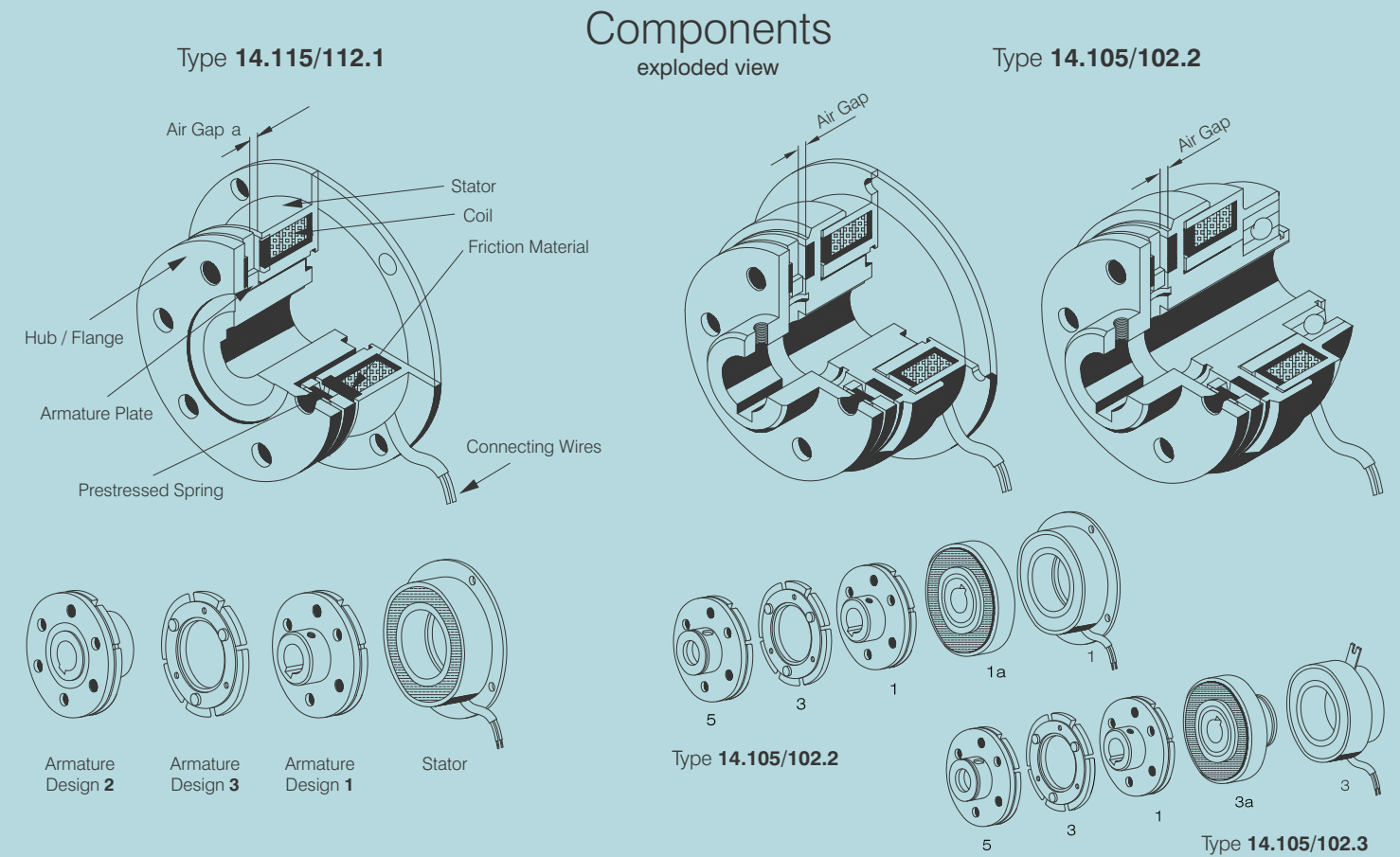
Printing Machines



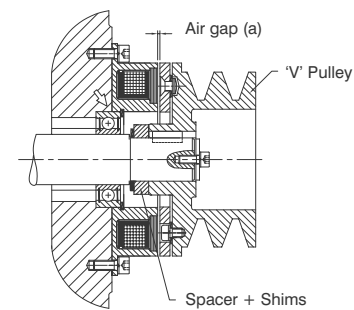
Special Purpose Machinery



Special Test Rigs

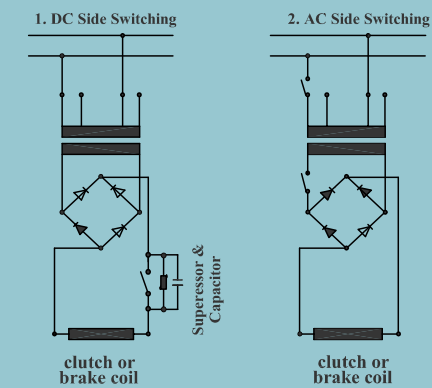


Mounting Type 14.115



Combination of the 115-1.3 and 'V' Pulley

Switching

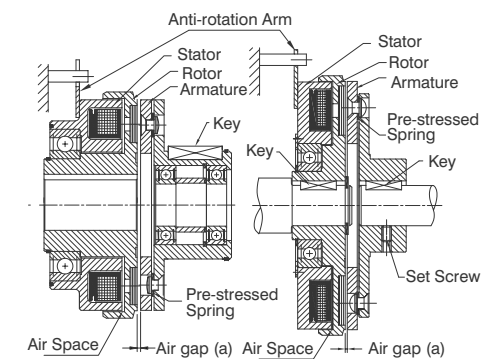


Our Brakes & clutches require DC supply voltage which is obtained through AC/DC rectification. Normally switching is carried out on the AC side.

Working Type 14.115

When supplied with DC voltage the armature is attracted towards the friction material of the rotor and transmits the torque free of back-lash. When the supply is interrupted, the pre-stressed spring pulls the armature back into its original position free of residual torque even when mounted vertically.

Mounting Type 14.105



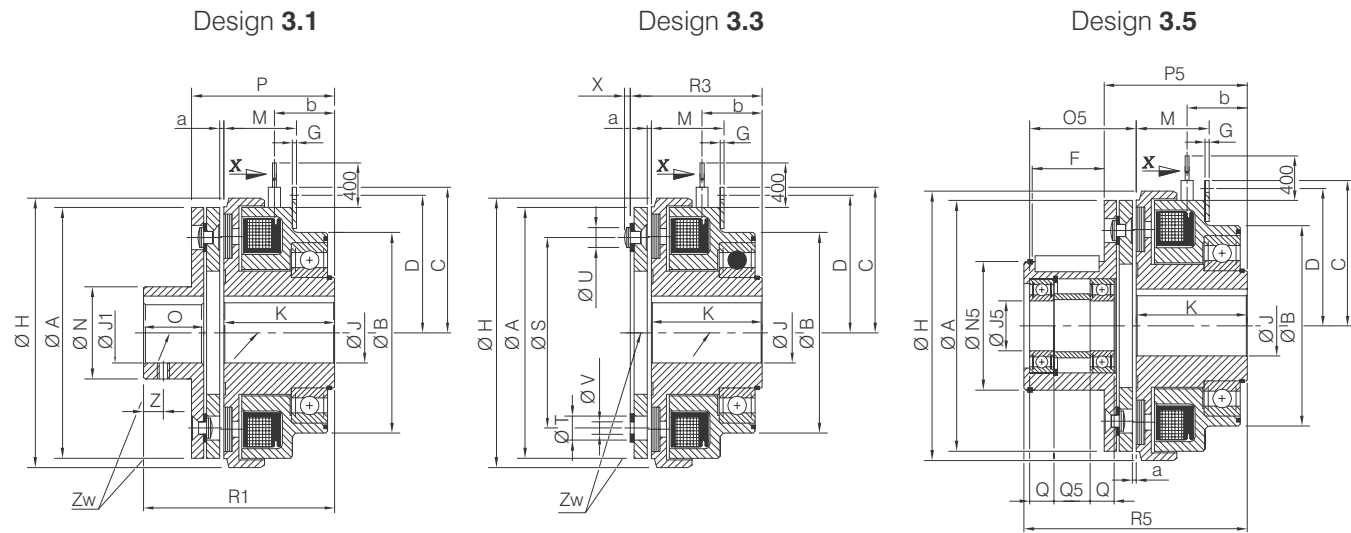
Structure of the Bearing mounted type (105 model)

Working Type 14.105

When supplied with DC voltage the armature is attracted towards the friction material of the stator and the friction causes the rotating component to stop. When the supply is interrupted, the pre-stressed spring pulls the armature back into its original position free of residual torque even when mounted vertically.

However, for much faster engagement /disengagement time switching is carried out on the DC side for which a suitable arc suppressor and a capacitor is a must to protect the coil, switches etc. from high induction voltages produced during switching off power supply.

Engagement /disengagement time is a function of nominal release distance (airgap) and type of switching.



Tapped holes shown on dimension 'Z' on request,

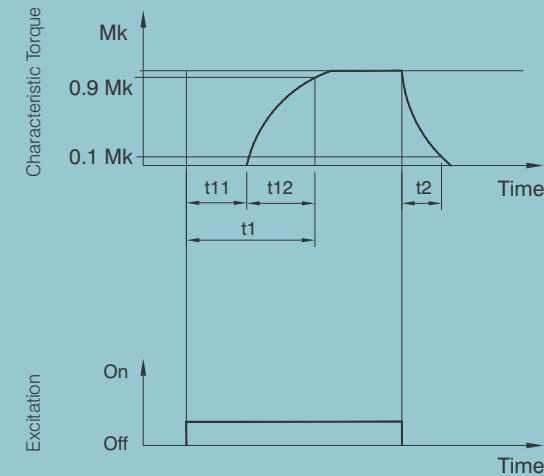
Parameters

All dimensions are in mm

Size	06	08	10	12	16	20	25									
Torque M RAT. (Nm)	7.5	15	30	60	120	240	480									
Max Speed [min ⁻¹]	8000	6000	5000	4000	3000	3000	2000									
Input Power P20 [w]	15	20	25	35	50	68	85									
Inertia [kg cm ²]	Rotor	1.33	2.94	8.66	24.6	69	215	566								
	Armature	1	0.6	1.71	6.64	18	63.3	190								
		3	0.42	1.18	4.72	13	48	137								
	5	0.92	2.82	9.2	25.8	86.8	258									
Permissible Misalignment	Zw (mm)	0.05	0.05	0.05	0.05	0.1	0.1	0.1								
Important : • Standard voltages : 24 VDC; 96 VDC; 190 VDC (Other voltages on request.) • P : Coil Power at 20° C • Permissible voltage change +5% to -10% • @Circlip grooves to DIN 472 • Keyways to IS : 2048 wherever possible otherwise to DIN Standard • Also available following Brakes <table border="1"> <thead> <tr> <th>Size</th> <th>Torque</th> </tr> </thead> <tbody> <tr> <td>31</td> <td>630</td> </tr> <tr> <td>40</td> <td>1250</td> </tr> <tr> <td>50</td> <td>2500</td> </tr> </tbody> </table> • Please call us for more details.	Size	Torque	31	630	40	1250	50	2500	ØA	63	80	100	125	160	200	250
	Size	Torque														
	31	630														
	40	1250														
	50	2500														
	ØB	64	68	85	100	127	151.5	152.4	152.4							
	C	41	50	61	72.5	99	119	145	145							
	D	37	46	57	68.5	93	113	139	139							
	E	4.1	4.1	4.1	4.1	8.1	8.1	8.1	8.1							
	E ₁	10	12	14	14	20	20	20	20							
	F	17	22	27	36.5	44.4	53.4	63.5	63.5							
	G	1.5	1.5	2.5	2.5	3.5	3.5	3.5	3.5							
	ØH	68	85.5	107	134.3	170	214.3	266.5	266.5							
	K	40	43.5	49	55	61.5	74	81	81							
	M	26	28	32.5	36	41.7	48.1	55.2	55.2							
	ØN	27	32	42	49	65	83	105	105							
	ØN ₆	38	45	55	64	75	90	115	115							
	O	15	20	25	30	38	48	55	55							
	O _s	22.7	32.2	39.4	51.5	63	77.9	91.9	91.9							
	P	47.5	52	60	68	77.5	94.4	105	105							
P _s	47	52	60	68	77.5	95.4	105	105								
Q	8	9	12	12	13	15	19	19								
Q	4	5.5	6.5	18	28	34	38	38								
R ₁	59	68	90	92	108.5	133.5	149	149								
R ₃	44	48	54.9	62	70.5	85.4	93.9	93.9								
R ₅	67	77	90	108	127.5	155.4	175	175								
ØS	46	60	75	95	120	158	210	210								
ØT	3 x 6.3	3 x 8	3 x 10.5	3 x 12	3 x 15	3 x 18	4 x 22	4 x 22								
ØU	3 x 5.5	3 x 7	3 x 9	3 x 10	3 x 13	3 x 16	4 x 20	4 x 20								
ØV	3 x 3.1	3 x 4.1	3 x 5.15	3 x 6.1	3 x 8.2	3 x 10.2	4 x 12.2	4 x 12.2								
X	1.4	1.7	2.1	2.5	3	4	4.3	4.3								
Z	5	6	6	10	10	15	20	20								
a	0.2	0.2	0.2	0.3	0.3	0.5	0.5	0.5								
b	22	24	27.5	29.5	35	42.5	45.5	45.5								
ØJ ^{H7}	** 10,15 *** 20	17, 20 25	20, 25, 30 30	20, 25, 30 40	25, 30, 40 50	38,42, 48 65	40, 45, 50 60	40, 45, 50 60								
ØJ ₁ ^{H7}	** 10 *** 10,12,15 17	10 14,17, 20 20	14 20, 25, 28 30	14 25, 28, 30 35	20 25, 28, 40 45	25 40, 45, 50 60	25 40, 50, 60 80	25 40, 50, 60 80								
ØJ _s ^{H7}	12	15	20	25	30	40	45	45								

If clutch is engaged at 0 RPM, torque will be 30% - 35% than the rated torque

Specifications are subject to change without notice.



t1 Engagement Time t11 Delay Time
t2 Disengagement Time t12 Torque Rise Time

* Average times measured with rated air-gaps.

Brake Size	t11ms	t12ms	t1ms	t2ms
06	10	20	35	10
08	15	25	40	20
10	20	40	60	30
12	25	55	80	45
16	30	70	100	60
20	35	80	115	70
25	40	90	130	80

Clutch Size	t11ms	t12ms	t1ms	t2ms
06	15	30	45	10
08	20	55	75	15
10	25	85	110	25
12	35	105	140	40
16	45	125	170	50
20	60	140	200	60
25	75	155	230	70

Selection

1. Select basic brake according to the torque.

$$\text{Torque (Nm)} = 9550 \times (\text{Motor kW} / \text{RPM}) \times \text{Safety factor (K)}$$

Load Condition	Safety Factor (K)
Low masses, equal loading & non - intermittent operation	2.0
Low masses, light shock load & intermittent operation	2.5
Medium masses, light shock load & intermittent operation	3.0
Large masses, light shock load & intermittent operation	3.0
Diesel engine drive	4-5
Compressor drive	5-6
Non overhauling Loads	2-3
Overhauling Loads	3-4

2. Describe the brake with the ordering parameter. (Type, size, operating voltage and hub bore)

3. Choose optional extras required (G pcd, tacho mounting provision, friction plate (instead of mounting flange), with microswitch).

4. Choose appropriate safety factor for the hoist, lift, inclined conveyors or equipment where holding against gravity is required.

5. Select proper Rectifier considering rated voltage of the brake. If coil operating voltage is 96 or 190 VDC you can use our rectifier (Call for product details).

6. Choose correct input AC voltage for rectifier.

Life

The life of friction liner depends on number of factors like, the inertia to be retarded or stopped, the relative speed, the operating frequency, the temperature at the friction surface etc. This brake must run dry. Oil, grease foreign materials, similar such lubricant affects the life and characteristics of friction materials. No general statement can be made about the life of friction materials.